

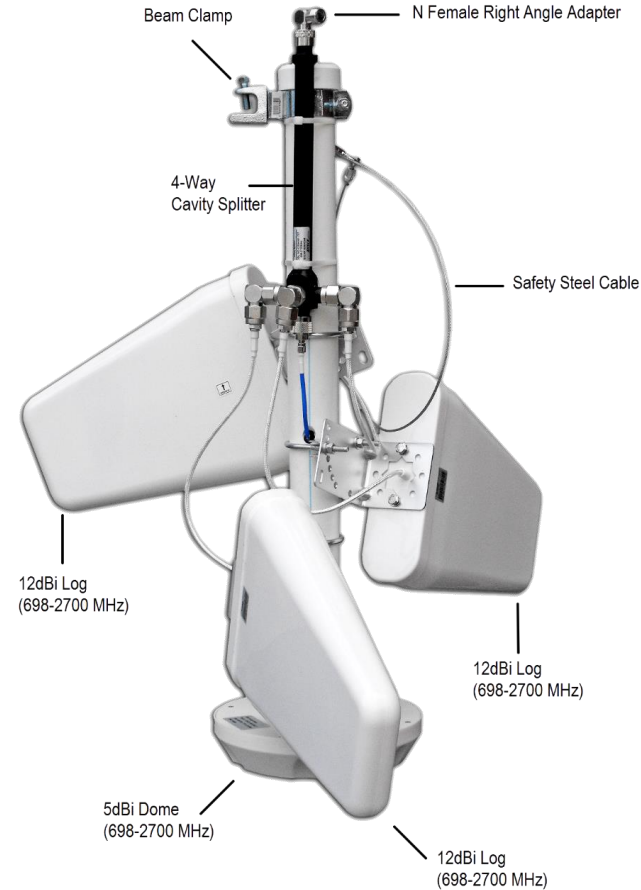
**SPECIFICATIONS**

Description	Specification	
Frequency Range	698 ~ 2700 MHz	
Gain	5dBi ~ (Dome)	12dBi ~ (Log Periodic)
VSWR	< 1.5	
Impedance	50 $\Omega$	
Polarization	Linear, Vertical	
BW/Azimuth	360 °	
BW/Elevation	90 °	
Front to Back Ratio	>27dB	
Connector	N (Female)	
Dimensions	711 x 711 mm / 28" x 28"	
Weight	4kg / 8.8 lbs.	
Temperature	-40°C ~ +80°C	
Mounting	Warehouse Steel Beam Clamp with Safety Cable	
Color	Ivory / White	

**Application Image**



**360 Degree 1/2 Spherical Coverage**



**FEATURES:**

This multi-band PIM rated sectorized antenna tree is another innovative product engineered by JDTECK. Designed for tall warehouse style ceilings where added gain is needed to propagate a signal all the way down to ground level. It reduces the amount of transmission points needed to cover a very large area. The log antennas used in a triangular formation together with the dome antenna used at the base of the array creates a very large coverage zone that eliminates shadow spots due to its semispherical radiating pattern. It is therefore best installed in a centralized location of the space you want to cover. This antenna includes with a beam clamp to easily mount it to the crossbeams of a warehouse ceiling as well as a 100 Lb rated steel cable and clasp for added safety. The area of coverage from this antenna will vary in size and depends on the composite power of the DAS. The input signal together with your link budget will determine what your final coverage area will be.

- Multi-Band (698-2700 MHz)
- Easily Attach to Cross-Beams
- Safety Cable Included
- Designed for High Warehouse-Type Ceilings
- Shipped Semi-Assembled