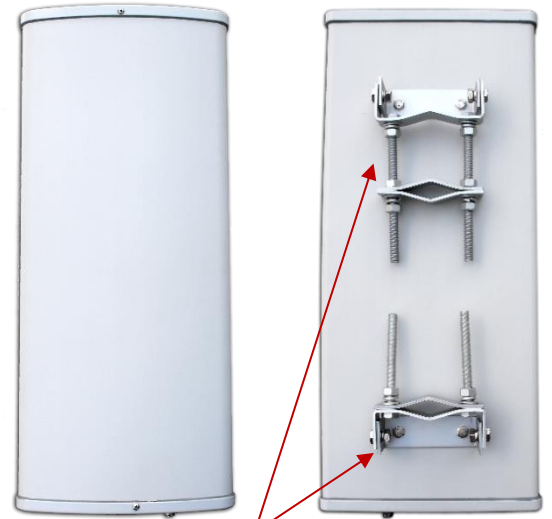
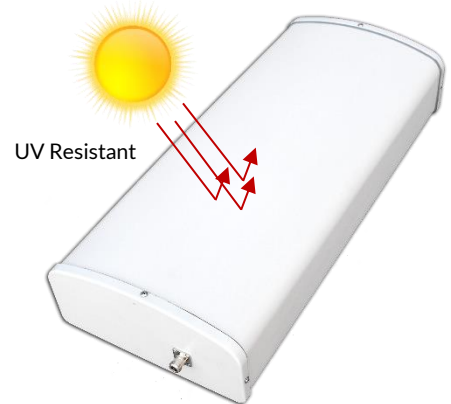


SPECIFICATIONS

| Description | Specification | |
|---------------------|--|-----------------|
| Frequency Range | 698-960 MHz | 1710 ~ 2700 MHz |
| Gain | 11dBi | 12dBi |
| VSWR | < 1.5 | |
| Impedance | 50 Ω | |
| Polarization | Linear, Vertical | |
| BW/Azimuth | 65° | |
| BW/Elevation | 30° | |
| Front to Back Ratio | >27dB | |
| Connector | N (Female) | |
| PIM | 140dBc | |
| Power Handling | 200W | |
| Dimensions | 650 x 280 x 135 (mm) / 25.59" x 11.02" x 5.31" | |
| Weight | 8kg / 17.6lb | |
| Temperature | -40°C ~ +80°C | |
| Mounting | Pole mount | |
| Environmental | IP65 | |



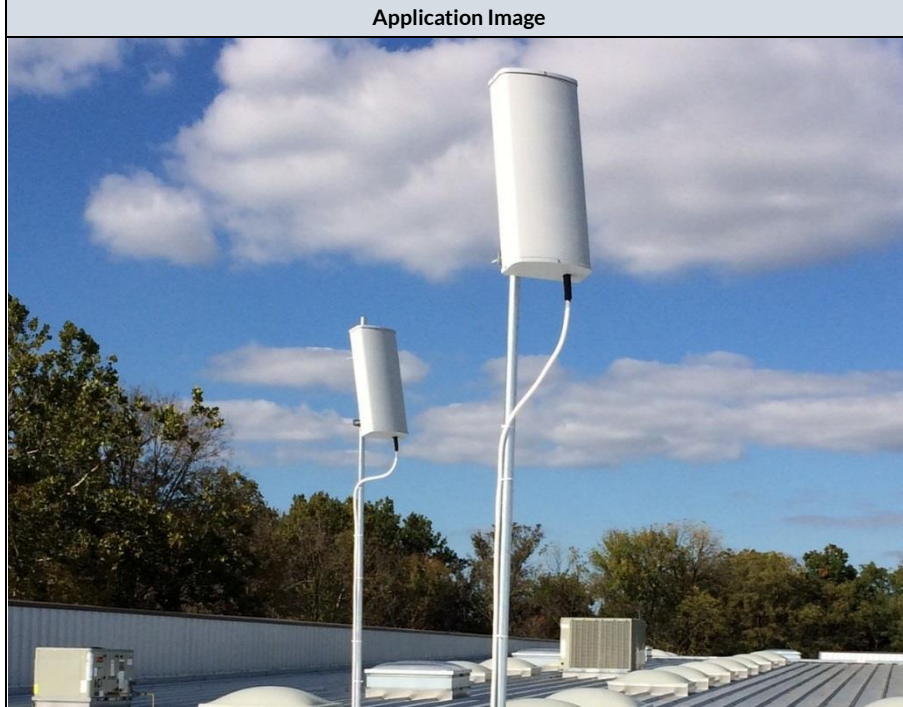
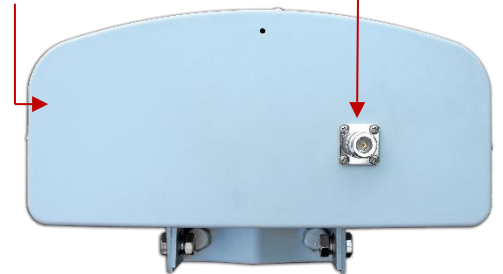
Mounting Brackets



UV Resistant

ABS Radome

RF Port



FEATURES:

This multi-band sector antenna can be used as either a donor or service antenna depending on the signal propagating requirements of your application. Ideal for a wide range of applications including: WLL, GPS, WLAN, WISP, WiMax, SCADA, LMR, Cellular, Paging, PCS, LTE, UMTS, CDMA and AWS applications. It has very good return loss and gain across the entire band as well as good front to back ratio. It is UV resistant and well made. All JDTECK antennas are tested for optimal return loss before they ship.

- Multi-Band (698-2700 MHz) • High Gain • PIM Rated • N Type Connector • Stainless Steel Bolts • Tilt-Adjusting Brackets • Easy to Install