

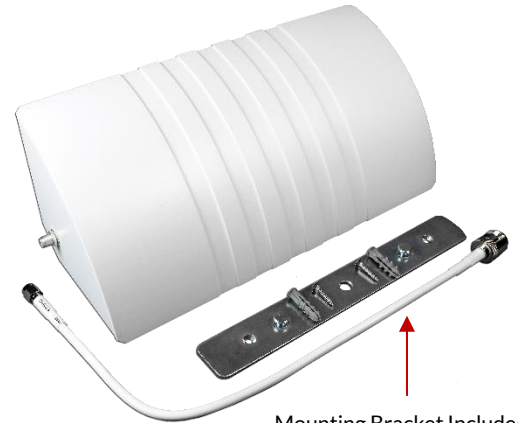
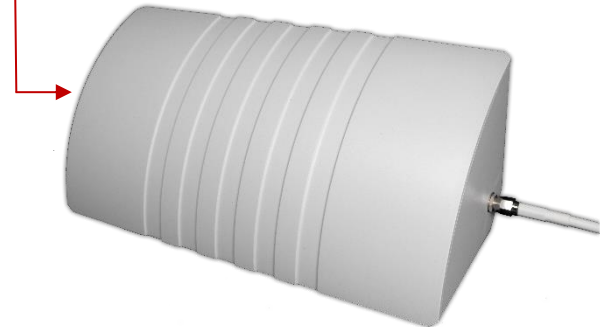
**SPECIFICATIONS**

| Description     | Specification                               |                |
|-----------------|---|----------------|
| Frequency Range | 698 ~ 960 MHz                               | 1710 ~2700 MHz |
| Gain            | 5 dBi                                       | 8 dBi          |
| VSWR            | < 2.0:1 Typ                                 |                |
| Impedance       | 50 $\Omega$                                 |                |
| Polarization    | Vertical / Horizontal (X-pol)               |                |
| BW/Azimuth      | 110°  | 50°            |
| BW/Elevation    | 65°   | 40°            |
| Max Power Input | 50W   |                |
| Connector       | N (Female) / SMA Female (Optional)          |                |
| Dimensions      | (5.12" x 9.06" x 2.87") / 130 x 230 x 73 mm |                |
| Weight          | 300g (0.94 lbs)                             |                |
| Temperature     | -40°C ~ +80°C                               |                |
| Mounting        | Vertical / Horizontal                       |                |
| Color           | Lt. Grey                                    |                |

**Application Image**



Mount Horizontally or Vertically



Mounting Bracket Included

**FEATURES:**

The JDTECK COIN Antenna was innovated out of a need to provide indoor cellular coverage for those hard to reach spaces while maintaining a very high aesthetic appearance. This antenna was designed to fit in the corner of a space (wall or ceiling) to minimize, or in some cases eliminate, exposed coaxial cables while still providing enhanced cellular coverage to the desired area. It also looks appealing and beautiful from every angle. We are now happy to release The JDTECK COIN Antenna (*French for Corner*) which can be mounted in either a vertical or horizontal position thus allowing it to be set in the corner of a space and remain discreet. This patent pending antenna also incorporates advanced micro-strip technology optimized for use with the latest 4G protocols in cellular and Wi-Fi communication. All JDTECK's antennas are tested for optimal return loss before shipping.

- Multi-Band (698-2700 MHz)
- Patented Design
- Very High Aesthetics & Quality Construction
- Advanced Micro-Strip Technology Supports All Protocols